

Assembly Instructions - RBK

Refrigerator Backer

R1

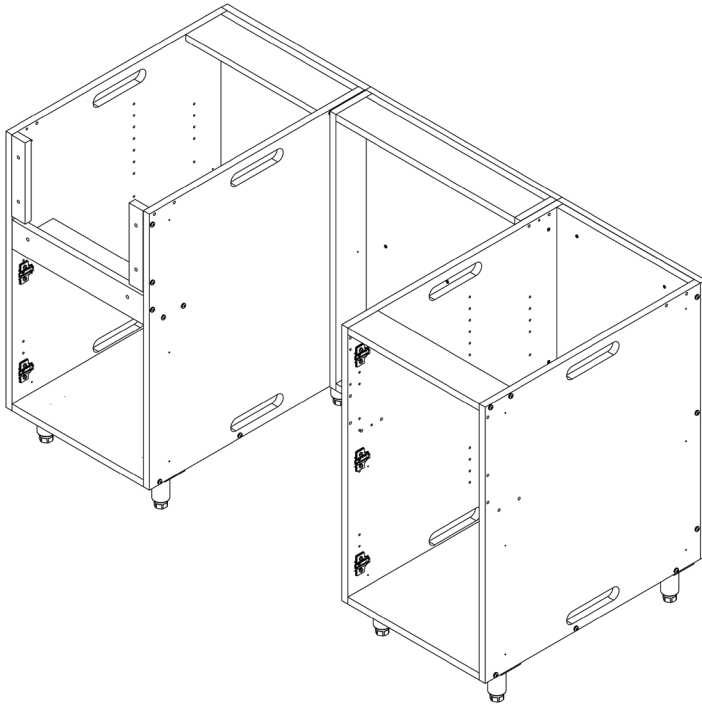
Refrigerator
Backer
24"W x 30"H

R2

Refrigerator
Backer
15"W x 30"H

R4

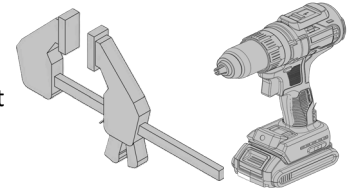
Refrigerator
Backer
22"W x 30"H



Before you start assembly, inspect all panels and hardware to ensure nothing is damaged and that you have everything required.

Required Tools

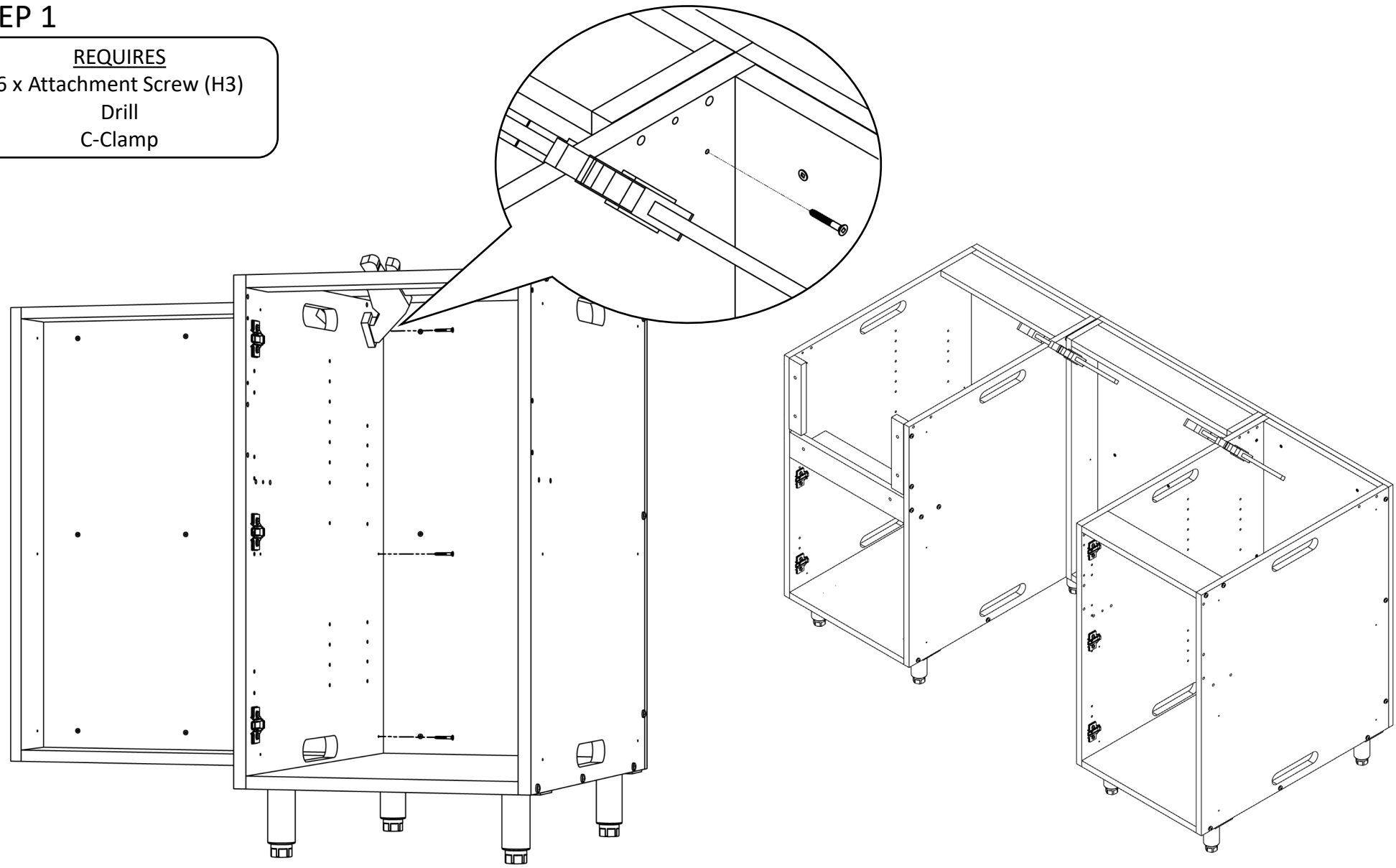
Electric Drill with square bit
2 x C-Clamp



For assistance visit
Weatherstrong.com
888-845-0004

STEP 1

- REQUIRES**
- 6 x Attachment Screw (H3)
- Drill
- C-Clamp



Align finished back of **Refrigerator Backer** with finished back of cabinet, use c-clamp to hold in place. Using the Drill and 3 **Attachment Screws** (H3) attach the **Refrigerator Backer** to the adjacent cabinet. Repeat these steps to attach the other cabinet.